

What to do about pannes?

- When should panne development be welcomed?
- When we should take a 'wait and see' approach?
- When should panne development be addressed by some sort of restoration?

Smith Point North

Mastic/Shirley

1930 - 1974 - 2008

Produced by Fred Mushacke
for The Nature Conservancy



Smith Point North

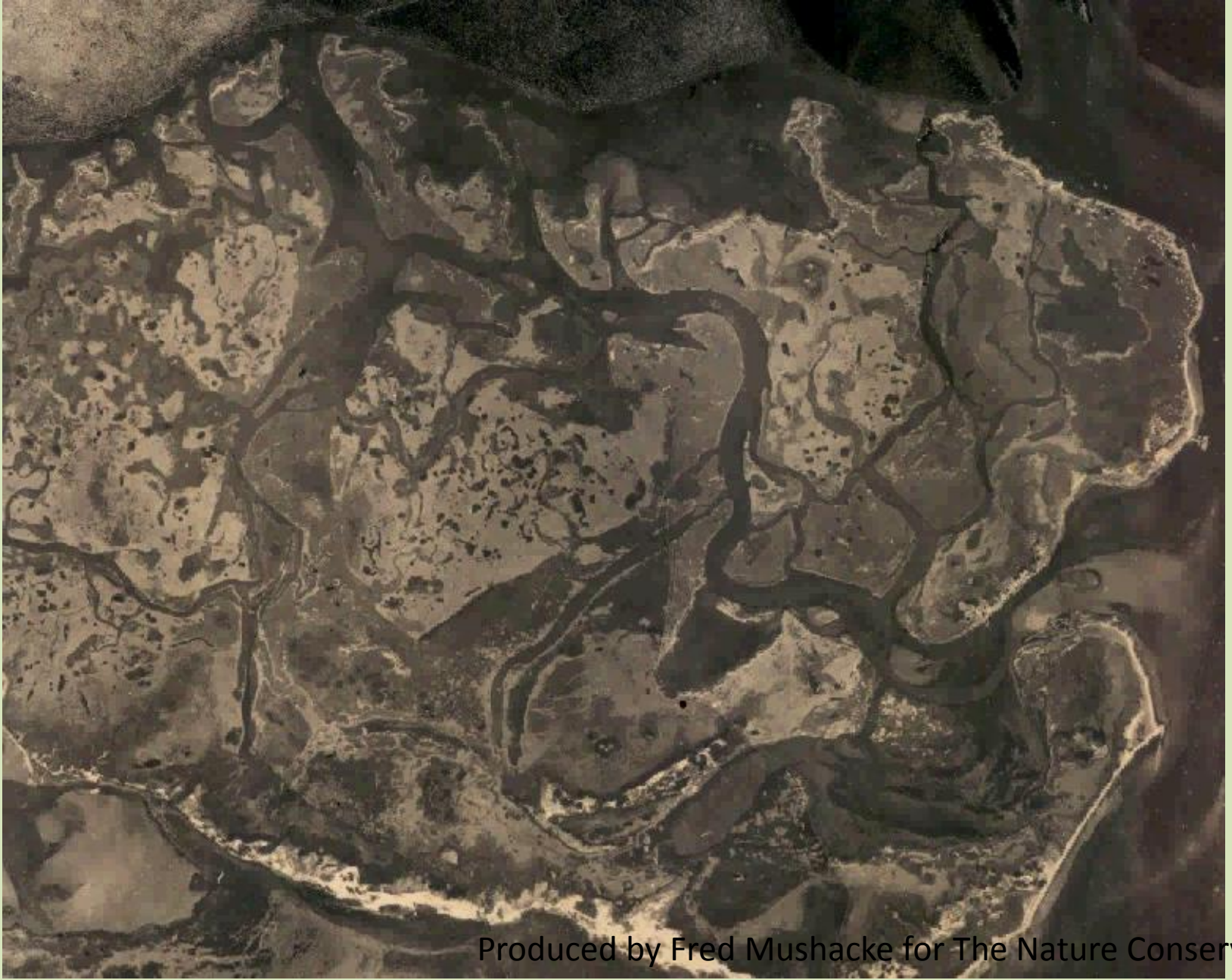
Development of pannes

1974 - 2008

Produced by Fred Mushacke
for The Nature Conservancy



Captree Island, Babylon/Islip 1930 - 1974

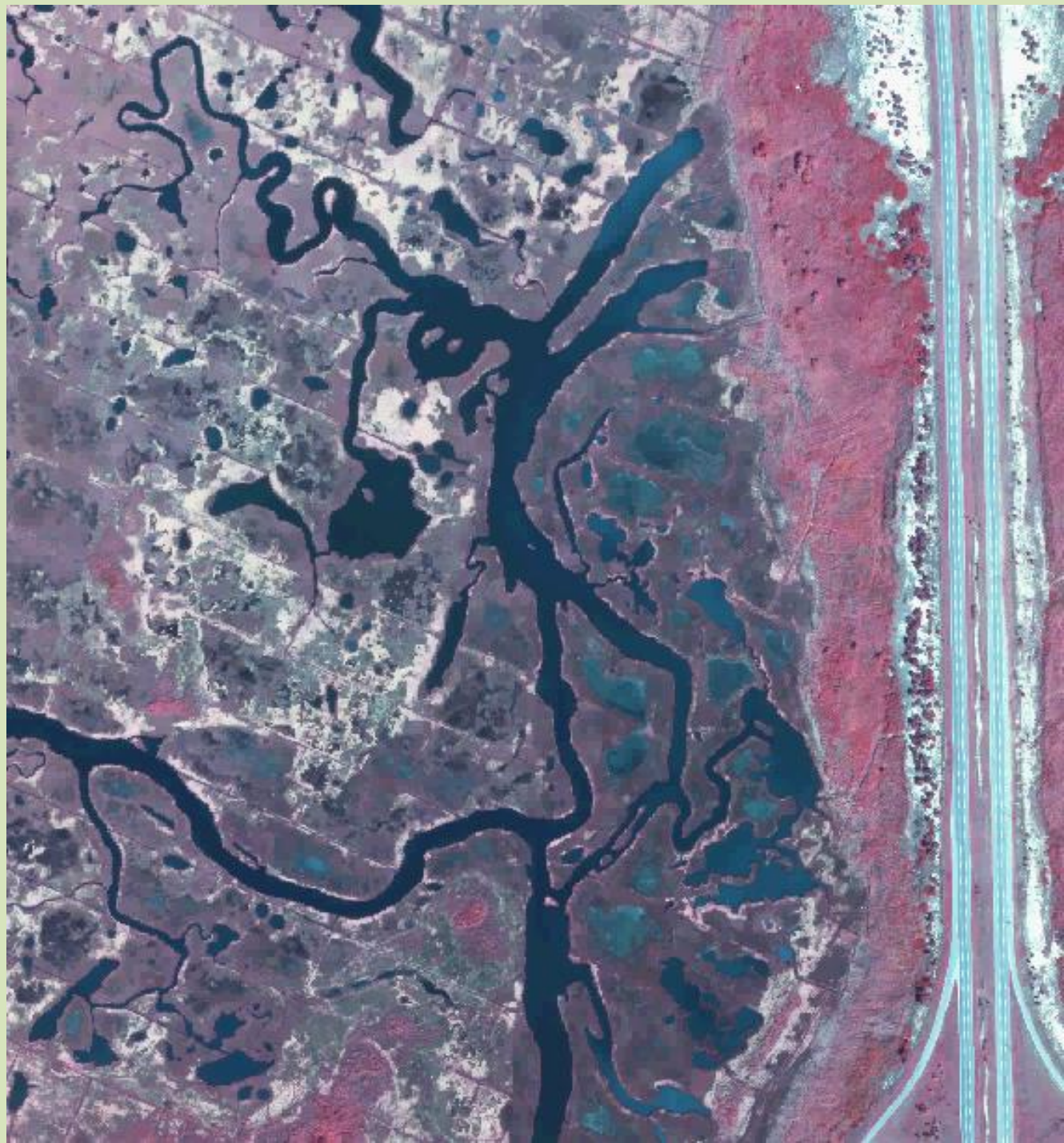


Produced by Fred Mushacke for The Nature Conservancy

Captree western side 1974 - 2008

Note expansion of
pannes in low marsh
areas to the west

Produced by Fred Mushacke
for The Nature Conservancy



Seatuck NWR Islip, NY

1974-2008

Produced by Fred Mushacke
for The Nature Conservancy



Gardiner County Park

2012 oblique aerial photo



Photo provided by Suffolk County

Bass Creek, Mashomack Preserve

Shelter Island

A case of 'wait and see'?

