

**LISS MANAGEMENT COMMITTEE MEETING
JANUARY 18, 2024**



Attendees: Danielle Alexander, NYCDEP; Jim Ammerman, NEIWPCC; David Ansel, STS; Rick Balla, EPA R2; Cassandra Bauer, NYSDEC; Erik Bedan, CTDEEP; Shahela Begum, RAE; David Boyer, MADEP; Robert Burg, NEIWPCC; Amanda Center, Responsive Management; Emma Coffey, CTDEEP; Mel Coté, EPA R1; Margaret Cozens, CT Sea Grant; Ashley Desrosiers, EPA R1; Holly Drinkuth, CAC/CT; Madeline Duda, Response Management; Melissa Duvall, EPA LISO; Christopher Eagler, NYSDEC/NEIWPCC; Nancy Ferlow, USDA-NRCS; Richard Friesner, NEIWPCC; Melinda Gosselin, CTDEEP; Anya Grondalski, NEIWPCC; James Hagy, EPA ORD; Jonathan Hoffman, NYCDEP; Tim Hunter, CTDEEP; Shauna Kamath, NYSDEC; Tripp Killin, Jenian Foundation; Kate Knight, CTDEEP; Kristen Laccetti, EPA LISO; DeAva Lambert, CTDEEP; Aubrey Mayer, USFWS; Thomas Morgart, NRCS; Jonathan Morrison, USGS; Esther Nelson, EPA LISO; Robert Nyman, EPA R2; Leah O'Neill, EPA R1; Suzanne Paton, USFWS; Jimena Perez-Viscasillas, NYSG; Sara Powell, NYSG; Evelyn Powers, IEC; Todd Randall, USACE; Denice Savageau, Samarra Scantlebury, NYSDEC; Sarah Schechter, CTSG; Sarah Schaefer-Brown, NYSG; Nancy Seligson, CAC/NY; Rebecca Shuford, NYSG; Evelyn Spencer, EPA R1; Paul Stacey, Footprints in the Water; Denise Stranko, STS; Jennifer Street, NYSDOS; Kelly Streich, CTDEEP; Cayla Sullivan, EPA LISO; Elizabeth Tanzi, EPA LISO; Mark Tedesco, EPA LISO; Brian Thompson, CTDEEP; Sue Van Patten, NYSDEC; Penny Vlahos, STAC; Gary Wikfors, NOAA; Abigail Winter, CTDEEP; Bessie Wright, EPA R1; Kimarie Yap, IEC; Harry Yamalis, CTDEEP

Introduction: **Mark Tedesco** welcomed everyone to the meeting around 9:00 am. He reviewed the meeting agenda, opened the floor for any personnel updates, and asked for feedback on the October 2024 management committee meeting. There was a proposal to add the CT National Estuarine Research Reserve (CT NERR) to the MC and the vote was passed. There is a new hire, her name is Anya Grondalski (NEIWPCC) and she is a Science communication/ Writer. Mark went through some of the 2024 October MC meeting feedback. There was support for Danfords, and Hilton at SBU but still open to suggestions. **Sue Van Patten** from NYSDEC acknowledged the special approval requirements for out-of-state travel. Any location needs to meet Federal per diem rates.

Science and Technical Advisory Committee (STAC) Updates: **Penny Vlahos** gave an update from the last STAC meeting. They discussed the CCMP revision. Penny noted that there were 3 reports from the LISS research project funded in 2020. The first was from, Beth Lawrence, the second, was Kalem Ladwig, and lastly, Jim O'Donnell. The STAC also had new Investigator presentations from UCONN Lionel Romero and EPA Melissa Duvall. The STAC then went through discussed strategies to improve LISS. The next call will be on March 1.

Citizens Advisory Committee (CAC) Update: **Holly Drinkuth:** Met on December 14 and voted in a new member from the City Island Oyster Reef Project, Sally Connolly. Holly was reelected as the CT co-chair for the CAC. She spoke of the representation of CAC members in the LISS Futures Fund announcements and followed up with the policy subcommittee meeting in D.C. where they met with the congressional caucus from the LIS watershed. The CAC also had

presentations on nitrogen reduction and the eelgrass story map from Penny Vlahos and Cayla Sullivan. The next meeting is March 14.

FY24 Budget: Leah O'Neill mentioned we will be working under a continuing resolution until March 8. Therefore, we do not know what EPA's final LIS appropriation will be. Also, we are still waiting on some base & supplemental budget requests from partners. There is no new information from what was distributed at the Oct 2023 MC meeting. EPA will soon distribute a package of supplemental requests to the MC for review. Base proposals will be discussed between the EPA and the recipient since they have already been approved by MC. Supplemental proposals will be reviewed by technical work groups and funding scenarios will be discussed in-depth at the March 28 I-Team meeting and presented at the April 18 MC meeting. Assuming we have a final appropriated budget, work plan and budget recommendations will be presented to the MC for discussion and action. We will also need to meet our statutory match requirements and final work plans will be due to EPA at the start of June.

CCMP REVISION- ROG Recommendations: Evelyn Spencer started by going over the new vision statement, which has now become, "Long Island Sound and its watershed have clean waters, healthy habitats, thriving wildlife, resilient coasts, and an engaged public." She then went over the new mission statement, which now reads "The LISS leads a collective effort to restore and care for the Sound and its watersheds."

Kristen Laccetti went over the descriptions of each of the commitments drafted by the ROG as detailed below:

- **EJ:** LISS commits to the fair treatment and meaningful involvement of all people, regardless of race, color, national origin, or income list strives to uphold equitable, inclusive, and accessible practices in decision-making.
- **Sound Science:** LISS commits to supporting sound science, which follows high standards of the scientific method to understand and care for the health of the sound and its watersheds. This includes identifying and incorporating traditional ecological knowledge, but this aims to make sound science available in a manner that is understandable to non-technical audiences.
- **Adaptive and Inclusive Management:** LISS commits to using science-informed processes and learning from collective experiences to make implementation and management decisions. LISS strives to include everyone in caring for the sound by engaging diverse audiences and working to make resources available and accessible to all.
- **Respect and Trust:** LISS commits to operating in a way that fosters respect and trust among collaborators, collaborators, communities, and the public in decision-making and program implementations.

Ashley Desrosiers spoke about how the CCMP is organized and how the ROG was tasked with simplifying the structure but also meeting the EPA's national estuary program guidelines. Ashley started by mentioning that for CCMP priorities, the ROG recommends signaling priorities through action plans and that this is the equivalent of the priority implementation actions in the 2015 CCMP. The next recommendations are develop a simple, aspirational goal statement, rename ecosystem targets and use the word objectives instead, and finally propose renaming implementation actions as CCMP Actions.

Cayla Sullivan began by going through the new goals of the CCMP. The new goals are now: clean waters and healthy watersheds, thriving habitats and abundant wildlife, sustainable and resilient communities, and informed and engaged public. These were all developed from the feedback of the ROG. Cayla then went into a recap of the MC notes from October. She noted that all ecosystem targets should be reviewed and evaluated to ensure that the Long Island Sound Study partnership has influence over them and their accomplishment, as well as making sure the target can be measured and tracked.

Mark Tedesco went through the ROG recommendations and had the MC members vote in the chat on options to adopt. **The set of recommendations as adopted by the MC is provided as an attachment.**

Cayla Sullivan and Kristen Laccetti went through a quick recap of the remaining elements of the CCMP revision process and directions. They are as follows: there are to be 3-5 objectives per goal, and we must consider if LISS needs a management objective as well. Each objective needs to be 5 years and will be linked to a 10-year objective. Modeling should be included as a tracking mechanism. The continued use of a SMARTIE structure and finally implementation actions will now be "actions." and there will be an overall 50 actions. There are now 4 **Writing Teams**. The leaders for each team are below:

- *Clean waters and Healthy Watersheds*: Sue Van Patten (NYSDEC), Kelly Streich (CT DEEP), Tim Hunter (CT DEEP)
- *Thriving Habitats and Abundant Wildlife*: DeAva Lambert (CT DEEP), Harry Yamalis (CT DEEP), Shauna Kamath (NYSDEC)
- *Sustainable and Resilient Communities*: Deb Abibou (CTSG), Elizabeth Hornstein (NYSG), Sara Powell (NYSG), Sarah Schaefer-Brown (NYSG), Sarah Schecter (CTSG)
- *Informed and Engaged Public*: Robert Burg (NEIWPC), Jimena Perez-Viscasillas (NYSG), Maggie Cozens (CTSG)

Cayla Sullivan discussed the CCMP revision and timeline. Writing teams should be done with the review and revision of the goals and objections by the April MC meeting. Then, the objections will then be presented to the MC, STAC, and CAC workgroups. It will be scattered throughout April, July, and October. Next is to present the CCMP revision at 3 Public

engagement Sessions, one in NY, one in CT, and one in the upper watershed. All work for revised objectives and actions will need to be completed by September 1st as this is when the formal 60-day public comment period is. Lastly, drafting and editing the CCMP text will be done by December. EPA has procured the services of a contractor to assist with the CCMP revision. The contract has 5 tasks:

- Project Management, which includes the creation and maintenance of a publicly available email address to receive all public comments on the CCMP revision process and send EPA monthly reports of the comments received from a public email address.
- Facilitation of the writing team group meetings, the contractor will provide facilitation and note-taking services to the writing teams. The contractor can support a total of 15 meetings, which is 3 hours of meetings.
- Facilitation of LISS partnership meetings and internal CCMP review.
- Facilitate 3 hybrid public engagement sessions in the spring of 2024.
- CCMP public comment period and the contractor will coordinate and facilitate 2 virtual public comment information sessions in the fall of 2024.

EJ Needs Assessment Report: Jimena Beatriz Perez-Viscasillas started by introducing Response Management, a social science firm that focuses on environmental issues. They aim to build relationships and connections with LISS partners and community-based groups and leaders to find out more about the needs of disadvantaged communities and community groups, and ultimately to use these findings from the project to inform future environmental management and programming.

Amanda Center (Responsive Management) presented the major findings identified by communities and community-based organizations. Major findings or Community-identified needs by *Responsive Management* are that many of these overburdened communities have competing priorities and that participants often had needs associated with social and infrastructure issues and priorities. Every community had its own unique need, but all communities agreed that transportation was one of the major issues revolving around why they do not utilize the LIS. These communities noted that they want to be able to engage in activities in nature and utilize sound but find it difficult. They also want clean recreation spaces. These disadvantaged communities also noted they are tired of being studied and want action to be taken.

Maddie Duda (Responsive Management) gave recommendations to the findings above. The recommendations were to incentivize engagement to appeal directly to people who have competing interests, translate educational messages and signs, information should be provided about water quality and safety, support or develop programs that give people greater confidence in their ability to recreate safely in and around the sound, follow up with the groups and communities who are engaged with this process to identify avenues for further developing

relationships, gather continuous feedback to ensure that the Long Island Sound Study's work is in sync with Community Priorities, potentially hire someone to cover NYC, and finally engage communities throughout the entire decision-making process.

Jimena Beatriz Perez-Viscasillas noted that the next step for all of us is to start thinking about how, now that we know these needs, can we best support these needs through the LISS and in the new CCMP process.

NEP Program Evaluation: **Ashley Desrosiers** went through the foundational facts about the NEP program evaluation. A program evaluation is required by EPA HQ every 5 years. The last one was for LISS in 2019. There are 2 two main elements to program evaluations. The self-evaluation submission, which showcases the accomplishments of the NEP and is due to EPA HQ by April 1st, and then a Site Visit will take place between June 26th- 28th 2024. Ashley noted to please send any site visit location suggestions to **Evelyn Spencer**. **Sue Van Patten** requested that state staff be notified if they are needed to participate in all or some part of the evaluation.

Future Funds: **Bessie Wright:** The LIS Futures Fund, run by NFWF, announced the 2023 recipients at a virtual event on Dec 4. A PDF of the information was sent following the meeting. After years of dedicated service leading the Futures Fund Lynn Dwyer has announced her retirement from NFWF.

Tribal Engagement: **Bessie Wright:** mentioned that EPA has been in contact with federally recognized Nations within LIS and has gotten positive responses. She mentioned to please use herself as the main point of contact with Nations.

Adjourn: The next LIS Management Committee meeting will be on April 18, 2024.

Attachment: Revision Oversight Group recommendations as modified and adopted by the Management Committee (PDF file).



Long Island Sound Study

A Partnership to Restore and Protect the Sound



CCMP Revision Recommendations

(as approved by the Management Committee on 1/18/24)



Vision Statement

Mission Statement

Commitments

CCMP Organizational Structure

CCMP Goals (formerly Themes)

Objectives (formerly Ecosystem Targets)

Actions (formerly Implementation Actions)

Thank you, ROG Volunteers!



Long Island Sound Study
A Partnership to Restore and Protect the Sound

Deb Abibou

Jim Ammerman

Erik Bedan

Robert Burg

Sylvain DeGuise

Holly Drinkuth

Chris Eagler

Richard Friesner

Lillit Genovesi

Elizabeth Hornstein

Shauna Kamath

Kamazima Lwiza

Jimena Perez-Viscasillas

Sara Powell

Sarah Schaefer-Brown

Sarah Schechter

Samarra Scantlebury

Nancy Seligson

Becky Shuford

Sue Van Patten

Abbie Winter

EPA Team

Directive to the ROG: Draft Vision and Mission Statements for MC review in January

Result: Drafted vision and mission statements for Management Conference review

Management Committee Decision: Keep ROG recommendations.



Vision: what we want the future to look like

Long Island Sound and its watershed have clean waters, healthy habitats, thriving wildlife, resilient coasts, and an engaged public.



Mission: what we do, who we serve, what we want to accomplish

The LISS leads a collective effort to restore and care for the Sound and its Watershed.

Directive to ROG: Refine underlying principles and values statement

Result: Drafted commitments list and descriptions

Management Committee Decision: Management Committee changed commitments to values. See slides for specific changes to values.

Values: The CCMP incorporates integral commitments that reflect the values of the program. These include environmental justice, robust science, sustainable adaptation to a changing climate, adaptive and inclusive management, and respect and trust.

- Environmental Justice
- Sound Science
- Adaptive and Inclusive Management
- Respect and Trust

Management Committee Decisions:

- Change “sound science” to “robust science”.
- Add “sustainable adaptation to a changing climate” to values.

- **Environmental Justice:** LISS commits to the fair treatment and meaningful involvement of all people regardless of race, color, national origin, or income. LISS strives to uphold equitable, inclusive, and accessible practices in decision-making and implementation of the CCMP. Those interested and affected by LISS activities should have the ability to represent themselves and their perspectives.
- **Management Committee Decision:** Keep ROG recommendation.

- **Robust Science:** LISS commits to supporting science that follows high standards of the scientific method, to understand and care for the health of the Sound and its watershed. This includes identifying and incorporating local Traditional Ecological Knowledge. LISS aims to make science fair, equitable, and accessible to all communities.
- **Management Committee Decision:** Add the “local” to TEK and add highlighted sentence.



- **Sustainable Adaptation to a Changing Climate:** LISS commits to support initiatives and projects that encourage sustainable adaptation to reduce risks from a changing climate.

- **Adaptive and Inclusive Management:** LISS commits to using science-informed processes and learning from collective experiences, including Traditional Ecological Knowledge, to make implementation and management decisions. LISS strives to include everyone in caring for the Sound by engaging diverse audiences and working to make resources accessible to all.
- **Management Committee Decision:** Add “Traditional Ecological Knowledge” to the ROG recommendation.

- **Respect and Trust:** LISS commits to operating in a way that fosters respect and trust among collaborators, communities, and the public in decision-making and program implementation.
- **Management Committee Decision:** Keep ROG recommendation.



Directive to ROG: Translate Management Committee comments/directions into a CCMP organizational structure

Result: Drafted a simplified CCMP organizational structure

Management Committee Decision: Keep ROG recommendations.

EPA HQ Requirement	How to Address Requirement in LISS 2025 CCMP	Example (using 2015 CCMP language)
Priorities	Reflect priorities in the Action Plans	Priority Implementation Actions
Goals	Goal name + simple, aspirational statement	Clean Waters and Healthy Watersheds: Improve water quality by reducing contaminant and nutrient loads from the land and the waters impacting Long Island Sound.
Measurable Objectives (where possible)	Objectives (formerly known as LISS ecosystem targets)	Extent of Hypoxia; Nitrogen Loading; Water Clarity, Impervious Cover, Riparian Buffer Extent; Approved Shellfish Areas; Sediment Quality Improvement
Action Plans	Actions	Clean Waters and Healthy Watersheds Implementation Actions 2020-2024 (e.g. WW-1, WW-2, etc.)



Directive to the ROG: Draft new CCMP Theme options

Result: Drafted new CCMP Goals (formerly Themes)

Management Committee Decision: Keep ROG recommendations.



Clean Waters and
Healthy Watersheds

Thriving Habitats and
Abundant Wildlife

Sustainable and
Resilient Communities

Informed and
Engaged Public



Directive to ROG: Translate Management Committee comments into an Ecosystem Target structure for CCMP Theme teams to follow.

Result: Drafted guidance and further clarification on Objective terminology, number, timeframe, tiering, tracking, climate and growth impacts, and SMARTIE structure for all targets to follow.

Management Committee Decision: Keep ROG recommendations.

- All ecosystem targets should be reviewed and evaluated to ensure that:
 1. The LISS partnership has influence over its accomplishment;
 2. The ecosystem target can be measured and tracked.
- Ensuring our ecosystem targets are both measurable and the LISS partnership has influence over their accomplishment should be our two top metrics for re-evaluating our existing ecosystem targets.
- Targets which are either outside the LISS wheelhouse and/or not measurable could be considered as supporting indicators but not ecosystem targets.



Ecosystem Target - Terminology

- **The ROG recommends using the term “Objective” to replace “Ecosystem Target.”**



Number of Objectives

- What direction should be given to the CCMP Writing Teams as they look to revise, discard, and/or draft new objectives regarding the number of objectives per goal?
- **3-5 Objective per goal, 3 is reasonable, 5 is the max**
 - Tie to limit of actions (certain amount of actions per objective)
 - ROG considered whether Objectives should have 1 or 2 “measurables.”
 - Example of 1 measurable with multiple measurements:
 - Objective: Extent of Hypoxia
 - Measurable: **Extent** of hypoxia
 - Two Measurements: Area and volume can be measurements
 - Example of 2 measurables:
 - Objective: Public Access
 - Two Measurables: One measurable is increased public access and second measurable is equitable public access
 - Measurement: Number of sites
 - Consider whether LISS needs a management Objective

Timeframe of Objectives

- Does the ROG recommend that objectives be developed with a 10-year outlook (2035)?
 - General support for a 10-year outlook with acknowledgement that LISS will be working to address short-, medium-, and long-term challenges
 - Use adaptive approach during future revisions/updates
 - Consider that actions could be on different scales (short or long term)
 - 5-year actions link to 10-year objectives.

Tiered Objectives

- Is this an idea the ROG wants to pursue? – Not at this time, perhaps in the future after objectives are revised.
 - Could be confusing to the public
 - This could be overly complicated

Tracking Objectives

- Should modeling be included as a tracking mechanism as well as monitoring? – **Yes**
 - Modeling can be used as a tracking mechanism, especially to fill in gaps where we have no monitoring
 - Modeling can synthesize to make sense of science and observations
 - Modeling will not replace monitoring

Climate and Growth Impacts

- “How well are we tracking what we are losing as well as restoring due to climate change as well as population growth impacts?”
- “Are we going to have ecosystem targets which look forward like considering introductions of new species?”
 - We have climate change indicators on our website that could be useful to look at.
 - Supporting Indicators are more flexible/can be added and removed as needed.
 - Theme Teams can think of recommendations for climate change indicators
 - LISS may not be obligated to track changes but should certainly watch and be aware. Focus more on using scientific expertise to analyze what we think changes mean.
 - Indicators are important for indicating the health of the system but we shouldn't have indicators for topics we don't work on



SMARTIE Structure

1. **S**pecific
2. **M**easurable
3. **A**chievable
4. **R**elevant
5. **T**ime-Bound
6. **I**nclusive
7. **E**quitable

SMARTIE Structure

1. **Specific:** What is it LISS wants to achieve? Consider including the 5Ws: what, why, who, where, when.
 - Specificity could lead to objectives that are too narrow, so consider broadest level, while still measurable and inclusive.
 - Strategic in identifying objectives that LISS seeks to accomplish programmatically.
 - Need to be specific on what the measurable will be – data, data source, and point of contact must all be defined.
 - The 5W's will vary between each objective, consider each one when selecting measurables of objectives.

SMARTIE Structure

2. **Measurable:** How will we know when LISS has achieved its goal? To be able to track progress and to measure the result of LISS goals, consider how much or how many?

- Clearly define what will be measured and what measurements will be used for an objective.
- For the measurables, identify what is already being measured. If there is none, identify the measurement needed and how much it will cost.
- Determine the acceptable frequency of measurables (i.e., water quality monitoring will differ from behavior changes). Environmental supporting indicators can be incorporated to supplement the progression of an objective.
- If possible, objectives should be numeric.
- If possible, establish a baseline for measuring progress for tracking purposes.
- Keep a list of objective ideas that do not make it as they could be helpful in the future (CCMP Revision or Indicators).

SMARTIE Structure

3. **Achievable:** Are there identifiable intermediate actions or milestones? What results can realistically be achieved given your available resources, including people, knowledge, money, and time?
- Objectives should be achieved in 10 years or sooner.
 - Objectives will be linked to 5-year actions that could also be achieved sooner.
 - Think about objectives in the long-term: If possible, incorporate phases where a 10-year timeline is a single phase (e.g., 3 phases of seafloor mapping).
 - With the current resources available, consider if the objective is within reach.

SMARTIE Structure

4. **Relevant:** Is the work relevant to the goals of the CCMP of the LISS? Is the work going to help us achieve our objectives?

- LISS partnership must have influence over the specific objective.
- Ensure the objective is relevant to LISS's scope, but also relevant to the priorities of communities within the Long Island Sound watershed.

SMARTIE Structure

5. **Time-Bound:** Within the 10-year timeline, how will you track progress?

- Determine at what frequency progress will be tracked.
- Consider phases and milestones for objectives.
- Partners who are providing data must be willing to work with Indicators Review Team for tracking and reporting.

SMARTIE Structure

6. **Inclusive:** How will LISS include disproportionately affected people into processes, activities, and decision making in a way that shares power?

- Objectives and goals should be understandable and meaningful to everyone.
- Consider if the objective will have input from impacted underserved communities.
- Consider not solely relying on the longest datasets to be more inclusive.
- Design an objective where inclusivity can take place.
- Once your team has reached “I” go back to “S” to avoid overlooking anyone. Consider **who** is impacted by the objective (i.e., is it broad enough?) .

SMARTIE Structure

7. **Equitable:** How will LISS include an element of fairness or justice that seeks to address systemic injustice, inequity, or oppression?

- When an objective has phases or milestones, identify ways that underserved communities could see positive impacts first.
- Be aware that LISS cannot "fix" these systemic problems in inequities in 10 years, but we certainly can make progress.
- Consider if an objective will mitigate inequities.
- Incorporate new information, findings, and lessons learned into objectives (i.e., EJ Assessment, SRC outreach).
- Incorporate adaptative management into objectives because as time progresses, we need to be able to adjust to be most efficient.



Directive to ROG: Provide guidance on Actions

Result: Drafted guidance and further clarification on action terminology, number, timeframe, and structure for all actions to follow

Management Committee Decision: Keep ROG recommendations.

Implementation Actions - Terminology

- CAC/STAC recommendation to rename Implementation Actions to "Actions."
- **Does the ROG recommend making this change? – Yes!**

LISS initially proposed 50 Actions over 5 years

What direction should be given to the CCMP Writing Teams as they look to revise, discard, and/or draft new actions regarding the number of actions per theme?

- Maximum of 5 actions per objective, but less is better.
- Recommend 3 actions per objective
- Aim for 10-15 actions per goal
- No exact number per objective but have an overall max (50 actions)

- The 2025 CCMP will have a 10-year outlook. EPA HQ expects LISS will **update** its CCMP Action Plan every 5 years and **revise** its CCMP every 10 years.
- **What timeframe should CCMP Writing Teams keep in mind while developing actions?**
- Actions should consider a 5-year time frame
- Timeframe should not be limiting though.
- It should be clear what work will be accomplished in 5 years but all activity does not need to be completed in 5 years
- Actions should point to what is needed to reach the 10-year Objectives
- If there are phases or longer-term perspectives associated with actions, these can be described in the technical support documents

- **Thoughts on how to make the technical support documents more useful?**
- Include EPA requirements but these do not have to be lengthy

- **What guidance should be given to the CCMP Writing Teams about the structure of actions as they look to revise, discard, and/or draft new actions?**
 - Actions should be meaningful and concise. Highlight what might be the broad steps that need to be taken that would require funding.
 - Actions should not have multi-clauses
 - Actions should be succinct with longer explanations in the technical supplemental documents

- **Clean Waters and Healthy Watersheds**

- Sue Van Patten (NYSDEC), Kelly Streich (CT DEEP), and Tim Hunter (CT DEEP)

- **Thriving Habitats and Abundant Wildlife**

- DeAva Lambert (CT DEEP), Harry Yamalis (CT DEEP), and Shauna Kamath (NYSDEC)

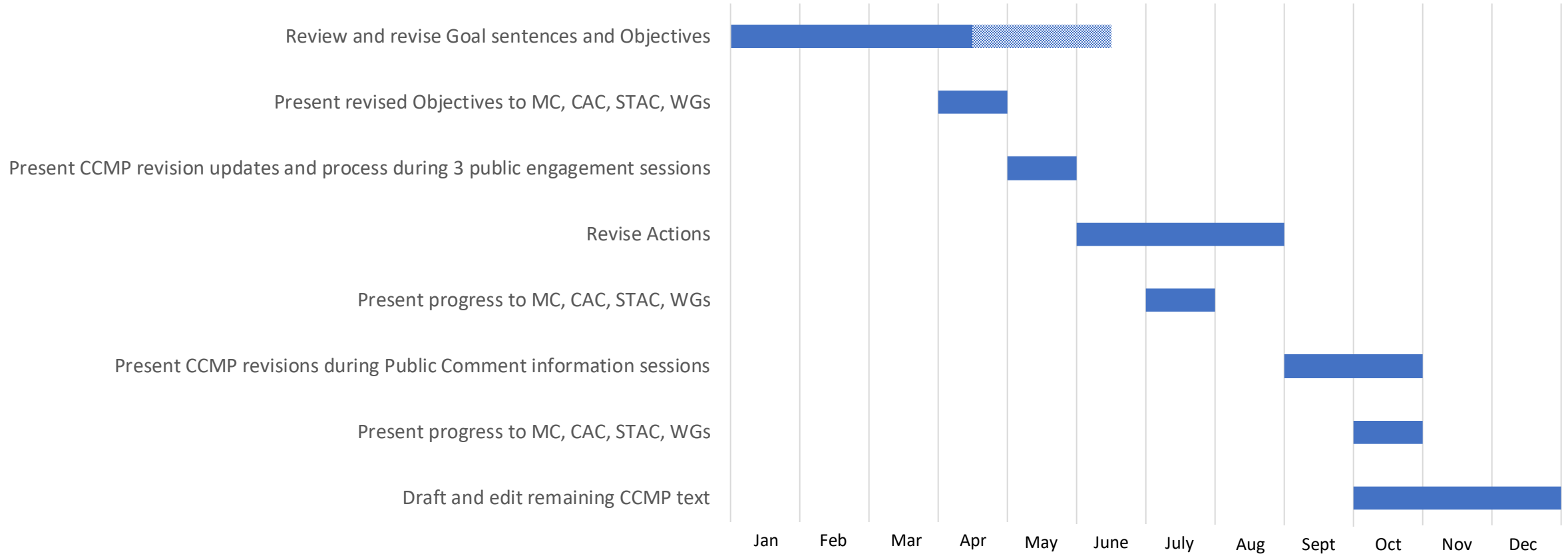
- **Sustainable and Resilient Communities**

- Deb Abibou (CTSG), Elizabeth Hornstein (NYSG), Sara Powell (NYSG), Sarah Schaefer-Brown (NYSG), Sarah Schechter (CTSG)

- **Informed and Engaged Public**

- Robert Burg (NEIWPC), Jimena Perez-Viscasillas (NYSG), Maggie Cozens (CTSG)

CCMP Revision Process and 2024 Timeline



Task 1: Project Management and Administration

Task 2: Facilitation of Writing Team Group Meetings

Task 3: Facilitation of LISS Partnership Meetings and Internal CCMP Review

Task 4: Public Engagement Sessions

Task 5: Public Comment Period