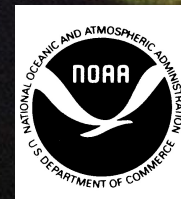


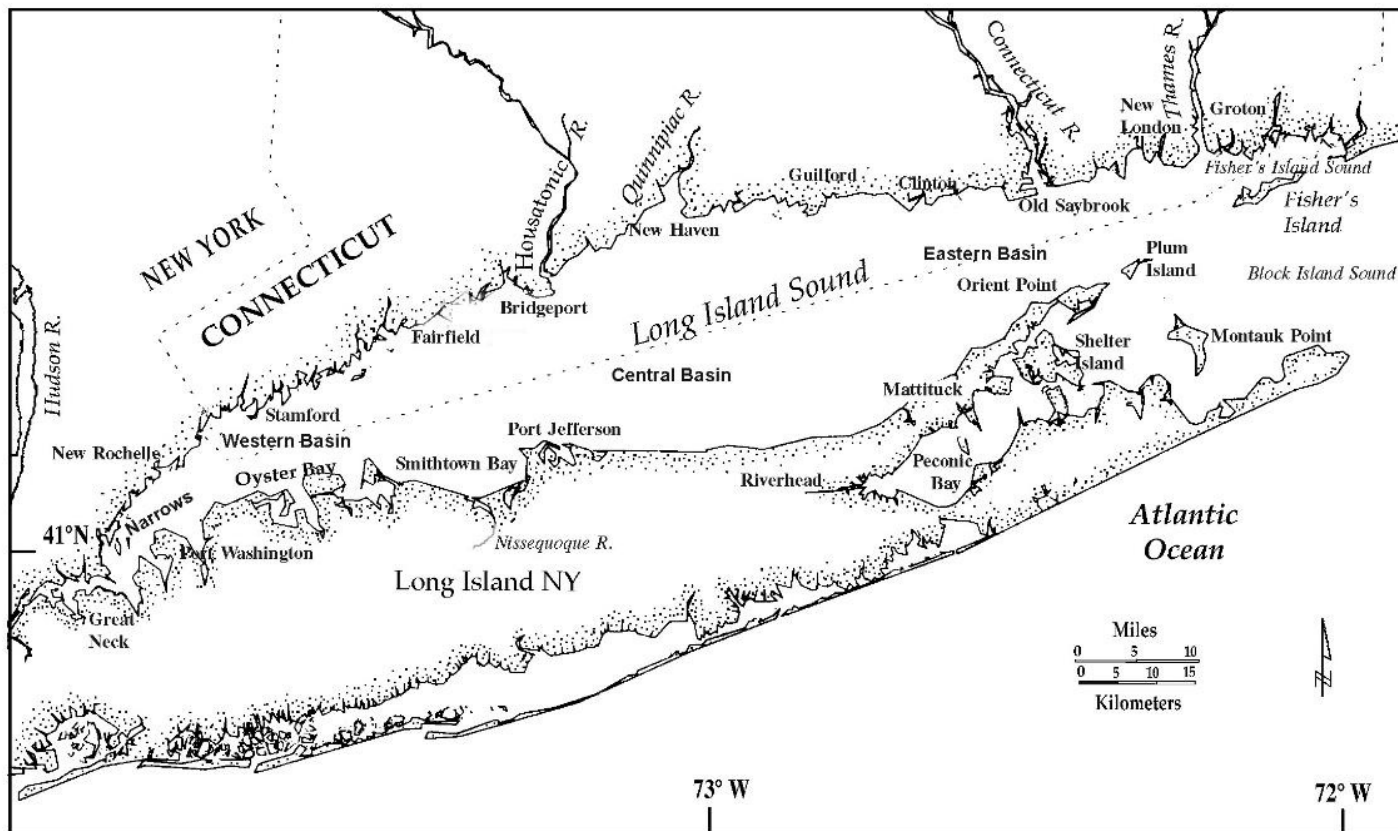
Living Treasures:

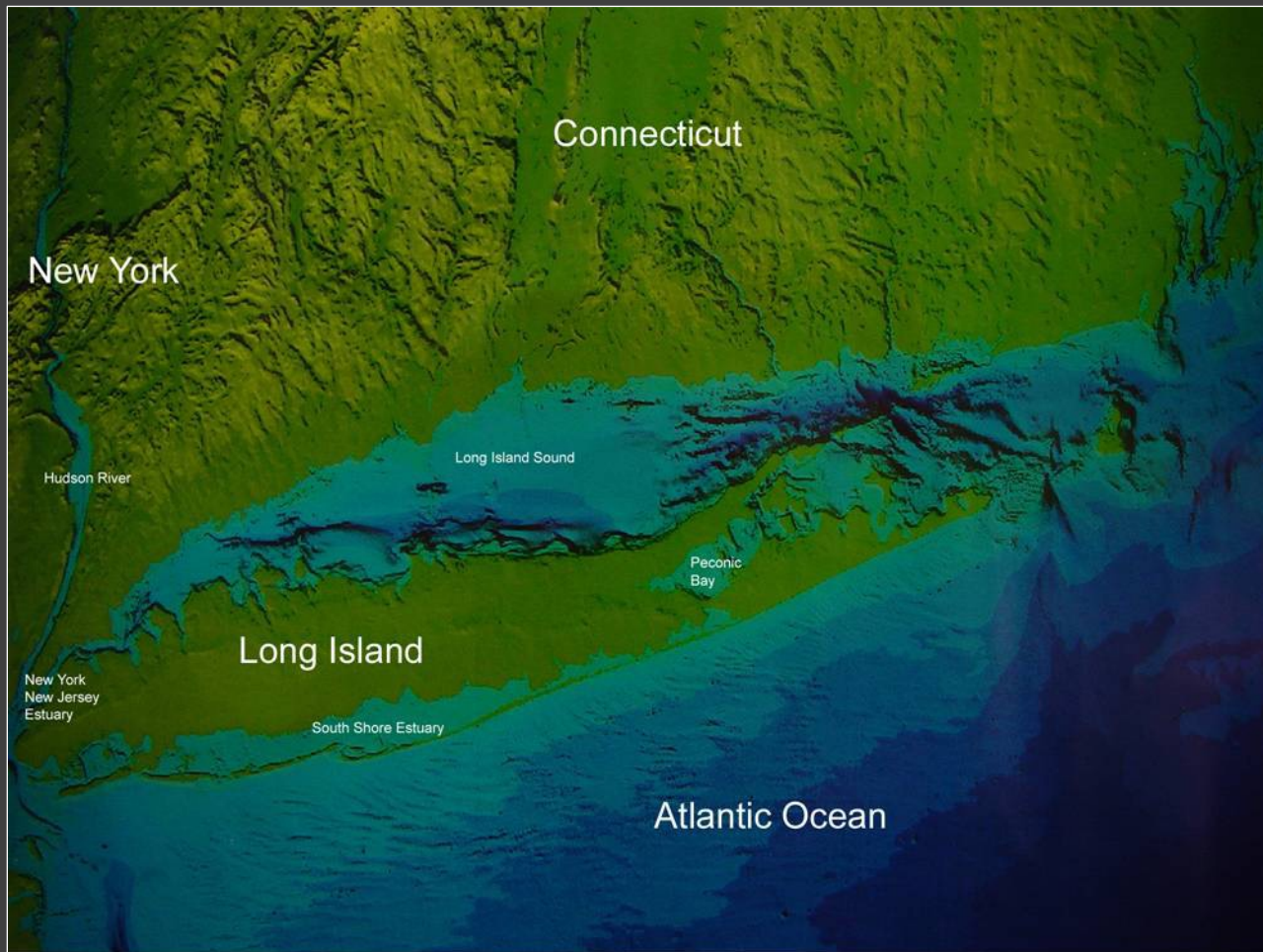
The Plants and Animals of Long Island Sound

Nancy Balcom, Connecticut Sea Grant; updated 2021



Long Island Sound is bordered on the south by Long Island, New York and on the north and west by the coasts of Connecticut and Westchester County, New York





Long Island Sound is the nation's second largest estuary – a special place where fresh water from rivers and streams and salt water from the ocean meet and mix

- Estuaries are among the most productive ecosystems in the world, providing feeding, breeding, nesting and nursery areas for many animals
- They are water bodies of constantly changing conditions, such as temperature and salinity
- Plants and animals that live in estuaries must be able to tolerate these changes; many have special adaptations that help them cope
- More than 170 fish species and 1,200 invertebrate species live year-round or seasonally in Long Island Sound



Habitat: It's Where You Live

- Long Island Sound has a broad range of habitat types, which in turn support a wide variety (diversity) of plant and animal species
- A habitat meets the primary needs of organisms, including food, water, air, and shelter
- Primary habitat types in the Sound are:
 - Salt marshes
 - Sandy beaches
 - Tidal flats
 - Rocky intertidal
 - Submerged bottom
 - Open water

Contacts

Connecticut Sea Grant
University of Connecticut
1080 Shennecossett Road
Groton CT 06340
<https://seagrants.uconn.edu>

New York Sea Grant
SUNY at Stony Brook
146 Suffolk Hall
Stony Brook NY 11794
<https://seagrants.sunysb.edu/>

Environmental Protection
Agency
Long Island Sound Study
888 Washington Blvd
Stamford CT 06904
<https://longislandsoundstudy.net>

